

# SUMMER FUN FOR KIDS

2024



## AROUND LONG ISLAND

parks • museums • historical sites • arts • zoos • and much more!

PATCHOGUE-MEDFORD  
**LIBRARY**

54-60 East Main Street, Patchogue, NY 11772  
(631) 654-4700 • [www.pmlib.org](http://www.pmlib.org)



# PLANNING A “STAYCATION” OR LOOKING FOR SOMETHING FUN TO DO WITH THE KIDS THIS SUMMER?

The Patchogue-Medford Library has put together this fun activity booklet for you and your family to explore! Inside you will find many local activities and museums, as well as other great spots to discover around Long Island.

In addition to the Long Island attractions highlighted in this booklet, don't forget you may also use your library card to check out a **Museum Pass** that offers discounts and free admission to New York City museums and gardens including:

Brooklyn Botanic Garden • Guggenheim Museum  
Children's Museum of Manhattan • Long Island Explorium  
Suffolk County Vanderbilt Museum • and many more!

Visit our website [www.pmlib.org](http://www.pmlib.org) to make a reservation or for more information.



Discount tickets are available for purchase at the Main Desk for the following:

Adventureland • Bronx Zoo • Long Island Aquarium • Long Island Science Center  
American Museum of Natural History • Splish Splash • Gateway Theatre  
LIRR Tickets to New York City - June 15, July 20 & August 17

Payments can be made by cash or credit card.



A SUMMER OF  
**ADVENTURE**  
— BEGINS AT —  
**YOUR LIBRARY™**

**Music, Activities, Crafts And More!**

For more information scan the QR code.

**PATCHOGUE-MEDFORD**  
**LIBRARY**  
[www.pmlib.org](http://www.pmlib.org) • (631) 654-4700



Monday through Friday at 12 pm • July 1- August 23

**FREE LUNCH** for KIDS at the **LIBRARY!**

Children and teens ages 18 and under are invited to stop by the Main Building for lunch and some fun!

Sponsored by Island Harvest



### **1920s ANTIQUE CAROUSEL JESS OWEN CAROUSEL HOUSE**

Mitchell Park on Front Street, Greenport, NY 11944  
631-447-0248  
www.villageofgreenport.org/carousel-greenport-village.php  
Hours: 9 am – 8 pm daily  
Fee: \$2.50 per ride



Featuring vintage painted horses, the carousel offers free rides to the lucky few who can grab a brass ring. Open all summer through Labor Day.

### **ADVENTURELAND**

2245 Route 110 (Broad Hollow Road) Farmingdale, NY 11735  
631-694-6868  
www.adventureland.us

Hours: See website

Fee: See website. Admission is available online and at the park. **Discount tickets available at the Library.** Adventureland has thrill rides, water rides, family rides, kiddie rides and so much more.

### **THE ADVENTURE PARK AT LONG ISLAND**

75 Colonial Spring Road Gate #3, Wheatley Heights, NY 11798  
631-983-3844  
www.longislandadventurepark.org

Hours: Wednesday - Sunday 10 am - 6 pm

Fee: See website

A new kind of recreation, adventure in the trees! Consists of over 140 platforms installed in the trees and connected by various configurations of cable, wood and rope to form bridges and zip lines. For adults & children 3 years old and up.



### **ANIMAL FARM PETTING ZOO & FAMILY PARK**

296 Wading River Road, Manorville, NY 11949  
631-878-1785  
www.afpz.org

Hours: 11 am - 5 pm 7 days a week

Fee: Adults \$18.95, Children 2-16, \$16.95, Seniors 65+ \$16.95  
Children under 2 are free

10 acres and hundreds of animals to pet and feed. Part of a rescue shelter, this family friendly zoo offers pony rides, a puppet theater, picnic areas and a baby animal farm.



### **AVALON PARK & PRESERVE**

200 Harbor Road, Stony Brook, NY 11790  
631-689-0619

www.avalonparkandpreserve.org

Hours: Summer (June-August) 6 am -8 pm (Closed Mondays)

Fee: Free

Avalon is a re-creation of the natural environment that greeted the first indigenous people to settle in New York State. 140 acres of natural conservation area with five diverse natural habitats.

### **BATTER UP BETHPAGE MINI GOLF**

130 Hicksville Road, Bethpage, NY 11714  
516-731-2020

www.batterupli.com

Hours: Weather permitting - Weekdays 9:30 am-10 pm, Saturday 9 am-10 pm, Sunday 9 am-8 pm



### **BAYARD CUTTING ARBORETUM**

440 Montauk Highway, Great River, NY 11739

631-581-1002

[www.bayardcuttingarboretum.com](http://www.bayardcuttingarboretum.com)

Hours: 9 am - 5 pm Tuesday-Sunday (April - October)

Fee: Entrance fee of \$8 per vehicle. Free with Empire Pass. **Empire Pass available at the Library.**

The Arboretum is a massive park filled with beautiful trees & plantings. There are Pre-K & elementary programs available. Activities such as biking, picnicking, sports, bathing and games are not permitted.



### **BAYVILLE ADVENTURE PARK**

8 Bayville Avenue, Bayville, NY 11709

516-624-7433

[www.bayvilleadventurepark.com](http://www.bayvilleadventurepark.com)

Hours: See website

Fee: See website

The Bayville Adventure Park offers various activities such as miniature golf, rock climbing, bumper boats, funhouses, and more.

### **BENNER'S FARM**

56 Gnarled Hollow Road, East Setauket, NY 11733

631-689-8172

[www.bennersfarm.com](http://www.bennersfarm.com)

Hours: See website

Fee: See website

Private 15 acre family homestead offering summer camps and workshops.

### **THE BIG DUCK**

1012 Route 24, Flanders, NY 11901

631-852-3377

[www.bigduck.org](http://www.bigduck.org)

Hours: 10 am - 5 pm Monday-Friday / 10 am - 5 pm Sunday / 10 am - 3 pm Saturday

Fee: Free

In 1931, Riverhead duck farmer Martin Maurer and his wife Jeule decided to construct a giant duck-shaped duck shop. They hoped to sell the Peking ducks they raised to passing motorists along Riverhead's West Main Street. The Big Duck is now open to the public as a gift shop.



### **BROOKHAVEN NATIONAL LABORATORY - SUMMER SUNDAYS**

William Floyd Parkway (County Road 46). Upton, NY 11974

631-344-2651

[www.bnl.gov/sundays](http://www.bnl.gov/sundays)

Fee: Free

For several Sundays this summer, the Brookhaven Lab will be bringing their science into communities with Summer Sundays in Suffolk. See website for more details. June 30 - Family Fun. July 21 - Dazzling Discoveries. August 4 Innovation and the Environment. September 15 - Fascinating Physics.

### **CALEB SMITH STATE PARK PRESERVE**

581 W. Jericho Turnpike, Smithtown, NY 11787

631-265-1054

[www.parks.ny.gov/parks/calebsmith/](http://www.parks.ny.gov/parks/calebsmith/)

Hours: Tuesday - Sunday 9 am - 5 pm

Fee: \$8.00 per car, or you can use your Empire Pass.

Much of the Preserve's 543 acres is undeveloped, allowing visitors to explore its many different habitats, including freshwater wetlands, ponds, streams, fields and upland woods.

### **CAPTREE STATE PARK**

3500 East Ocean Parkway, Bay Shore, NY 11706

631-669-0449

[www.parks.ny.gov/parks/65](http://www.parks.ny.gov/parks/65)

Hours: Park closes daily at 10 pm

Fee: \$8.00 per car, or you can use your Empire Pass.

Home to the largest public fishing fleet on Long Island, Captree State Park is a fishing haven and a picnicker's delight, located on the eastern tip of Jones Island at the end of the Ocean Parkway.



### **CARRIAGE MUSEUM - LONG ISLAND MUSEUM**

1200 Route 25A, Stony Brook, NY 11790

631-751-0066

[www.longislandmuseum.org/exhibitions/the-carriage-museum/](http://www.longislandmuseum.org/exhibitions/the-carriage-museum/)

Hours: Thursday - Sunday from 12-5 pm

Fee: \$15 per person, \$10 for seniors (62 and older) \$10 for students ages 6-17 and college students with ID.

Person with disability \$5 (personal care assistants are admitted free). Children under 6 are free and active and retired military are free.

The Long Island Museum is dedicated to inspiring people of all ages with an understanding and enjoyment of American art, history and carriages as expressed through the heritage of Long Island and its diverse communities.

### **CATHEDRAL PINES COUNTY PARK**

116 Yaphank-Middle Island Road, Middle Island, NY 11953

631-852-5502

[www.suffolkcountyny.gov/Departments/Parks/Our-Parks/Cathedral-Pines-County-Park](http://www.suffolkcountyny.gov/Departments/Parks/Our-Parks/Cathedral-Pines-County-Park)

Hours: Dawn till Dusk

Fee: \$7 with Green Key, \$15 without Green Key

This 320-acre site is situated along the headwaters of the Carmans River. Picnic sites, bicycling, camping and hiking.

### **CHILDREN'S MUSEUM OF THE EAST END**

376 Bridgehampton/Sag Harbor Turnpike, Bridgehampton, NY 11932

631-537-8250

[www.cmee.org](http://www.cmee.org)

Hours: Monday- Sunday 9:30 am - 4:30 pm. Closed Thursdays.

Fee: \$19.00 non-members; free for members

[Museum pass available at the Library.](#)

CMEE offers hands on exhibits and educational programs aimed at kids, plus family events.



### **CM PERFORMING ARTS CENTER**

931 Montauk Highway, Oakdale, NY 11769

631-218-2810

[www.cmpac.com](http://www.cmpac.com)

Hours: See website

Fee: See website

The CM Performing Arts Center is a not-for-profit charitable organization which relies on community and individual support. Enjoy great local theater for a good cause. The center offers classes and camp.

Children's Theatre: Willy Wonka - July 13-27. See website to purchase tickets.

### **COLD SPRING HARBOR FISH HATCHERY & AQUARIUM**

1660 Route 25A, Cold Spring Harbor, NY 11724

516-692-6768

[www.cshfishhatchery.org](http://www.cshfishhatchery.org)

Hours: Daily 10 am - 5 pm

Fee: Free to Members & children under age 2; \$6.00 adults, \$4.00 ages 3-12, \$4.00 Seniors 65+,

The Hatchery is proud to have the largest living collection of New York State freshwater reptiles, fish and amphibians. Visit the two aquarium buildings and eight outdoor ponds.



### CONNETQUOT RIVER STATE PARK PRESERVE

3525 Sunrise Highway, Oakdale, NY 11769

631-581-1005

<https://parks.ny.gov/parks/8>

Hours: 8 am – 6 pm Tuesday-Sunday (Closed Monday)

Fee: \$8.00 per car, or you can use your Empire Pass.

The Preserve has 50 miles of hiking, horseback riding, cross-country ski and nature trails, as well as fishing (by permit only) on the Connetquot River.

### CRADLE OF AVIATION MUSEUM

Charles Lindbergh Boulevard, Garden City, NY 11530

516-572-4111

[www.cradleofaviation.org](http://www.cradleofaviation.org)

Hours: 10 am - 5 pm Tuesday-Sunday

Fee: See website

The Cradle of Aviation Museum is home to one of the world's most diverse and outstanding aerospace collections. You can see over 75 aircraft and space craft – from hot air balloons to jet aircraft and an actual lunar module! There is an immersive full-dome planetarium show on the weekends.

Museum pass available at the Library.



### CUSTER INSTITUTE & OBSERVATORY

1115 Main Bayview Road, Southold, NY 11971

631-765-2626

Hours: Saturday evenings from dusk to midnight (weather permitting).

Fee: Small donation shows your support.

Long Island's oldest public observatory. Lectures, classes and other special events

### EAST END SEAPORT MUSEUM & MARINE FOUNDATION

3rd Street, at the Ferry Dock, Greenport, NY 11944

631-477-2100

[www.eastendseaport.org](http://www.eastendseaport.org)

Hours: See website

Fee: Free (\$2.00 suggested donation)

The museum boasts an array of exhibits on the maritime heritage of the area, including displays on the Greenport menhaden fishing industry, the oyster industry, lighthouse lenses, a model ship of the USS Ohio and more. Visit the Village Blacksmith Shop and watch a real blacksmith at work.



### EISENHOWER PARK

Merrick and Stewart Avenues, East Meadow, NY 11554

516-572-0347

[www.nassaucountyny.gov/2797/Eisenhower-Park](http://www.nassaucountyny.gov/2797/Eisenhower-Park)

Hours: Call for more information.

Fee: Call for more information.

The 930-acre park offers a full range of athletic and family activities, including a pool, picnic areas, summertime entertainment, playgrounds, fitness trails and more.

### ELIZABETH A. MORTON NATIONAL WILDLIFE REFUGE

2595 Noyack Road, Sag Harbor, NY 11963

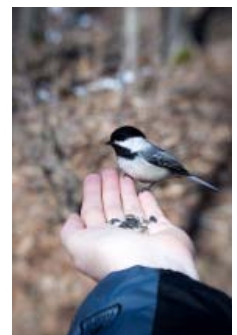
631-725-7598 Headquarters; 631-899-4293 Visitor contact station

[www.fws.gov/refuge/elizabeth-alexandra-morton](http://www.fws.gov/refuge/elizabeth-alexandra-morton)

Hours: Sunrise to Sunset

Fee: \$4.00 per vehicle

This refuge is a breath-taking 187-acre peninsula home to a variety of wildlife and habitats on the South Fork. Observe wildlife up close, bring seeds and feed the birds.



## **FIRE ISLAND LIGHTHOUSE**

Robert Moses Causeway, Bay Shore, NY 11706

631-583-5901

[www.fireislandlighthouse.com](http://www.fireislandlighthouse.com)

Hours: Open daily from 10 am - 4 pm. Tower closes at 3:30 pm

Fee; \$10 Adults. \$5 Seniors (65 and older). \$5 Child (12 and under - must be 42" tall).

Active Military personnel - free with ID. \$2 Members. Scout Groups \$5 - reservations required.

Experience Fire Island's natural beauty and Maritime History. Explore the nature trails, the bay and ocean that surround the lighthouse.

## **FLIGHT ADVENTURE PARK**

1850 Lakeland Avenue, Ronkonkoma, NY 11779

631-619-6000

[www.flightadventurepark.com](http://www.flightadventurepark.com)

Hours: Sunday - Thursday 12 - 8 pm / Friday & Saturday 12 - 9 pm

Fee: See website

An indoor trampoline park contains over 16,000 square feet of jumping surface, including a foam pit with 3 lanes, 3 dodgeball courts and 2 basketball slam dunk courts.

## **GATEWAY PLAYHOUSE**

215 South Country Road, Bellport, NY 11713

631-286-1133

[www.thegateway.org](http://www.thegateway.org)

Hours: See website

Fee: See website

Gateway Playhouse is Long Island's oldest summer theatre and one of the foremost, respected summer theatres in the US. Acting and musical theater classes for kids and adults. Live performances this summer!

Discount tickets available at the Library.



## **GREATER PATCHOGUE HISTORICAL SOCIETY/COMMUNITY MUSEUM**

Teen Center at the Patchogue-Medford Carnegie Library

160 West Main Street, Patchogue, NY 11772

631-804-9269 [www.greaterpatchoguehistoricalsociety.org](http://www.greaterpatchoguehistoricalsociety.org)

Hours: Friday and Saturday 12-3 pm

Fee: Free

Tells the story of Patchogue's development from early settlement to its growth as a vibrant community. See historic and vintage photo, maps, artifacts and more!



## **GRUMMAN MEMORIAL PARK**

4670 NY-25, Calverton, NY 11933

631-369-1826

[www.grummanpark.org](http://www.grummanpark.org)

Hours: 9 am – 5 pm daily

Fee: Free

This park pays tribute to the incredible advances in aviation and aerospace that took place on Long Island. It is situated on the former Grumman Aerospace Flight Test Facility in Calverton.



## **HARBES FAMILY FARM**

715 Sound Avenue, Mattituck, NY 11952

631-482-7641

[www.harbesfamilyfarm.com](http://www.harbesfamilyfarm.com)

Hours: See website

Fee: Free

Visit this family farm and enjoy kid's activities, barnyard adventures and delicious treats.

Museum Pass available from the Library for Harbes Barnyard Adventure.



### **HECKSCHER STATE PARK**

Heckscher Parkway, East Islip, NY 11730

631-581-2100

[www.parks.ny.gov/parks/136/details.aspx](http://www.parks.ny.gov/parks/136/details.aspx)

Hours: Open 7 days from sunrise to sunset

Fee: Between \$8-10, Free with Empire Pass. (Empire Pass available at the Library.)

Twenty miles of trails attract hikers and bicyclists. There are picnic areas, a boat launch ramp, playing fields, playground and 69 camp sites.

### **HERITAGE PARK**

633 Mount Sinai-Coram Road, Mt. Sinai, NY 11766

631-403-4846

[www.brookhavenny.gov/facilities/facility/details/Heritage-Park-Wedge-30](http://www.brookhavenny.gov/facilities/facility/details/Heritage-Park-Wedge-30)

Heritage Park offers two separate playgrounds, There is a smaller playground for children up to age 5, with climbing apparatuses, and a large one with a rock wall and a number of slides. Scattered benches and tables give parents places to lounge. Heritage is one of only a handful of parks in its area to offer ball fields and a walking/jogging/bike trail. On the grounds, the Heritage Center offers classes and events, hosts festivals and movie nights, and is available to rent for private parties. There are also community gardens and beautiful landscaping, plus a small waterfall. A splash park and concession stand complete the amenities.

### **HOLTSVILLE ECOLOGY CENTER & ANIMAL PRESERVE**

249 Buckley Road, Holtsville, NY 11742

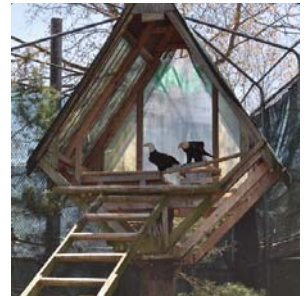
631-451-5330

[www.brookhavenny.gov/197/Holtsville-Ecology-Site](http://www.brookhavenny.gov/197/Holtsville-Ecology-Site)

Hours: Open daily 10 am - 4 pm. May 27<sup>th</sup>-September 29<sup>th</sup>

Fee: \$5 parking fee per car.

Features an exercise trail fitness course, zoo and ecology center, ecology exhibits and tours, free compost, greenhouses, a picnic area and triple pool complex.



### **HOME DEPOT – KIDS WORKSHOP**

Any Home Depot location

[www.homedepot.com/workshops](http://www.homedepot.com/workshops)

Pick up your free Kids Workshop Kit on the first Saturday of each month from 9 am - 12 pm - while supplies last.



### **JOHN W. ENGEMAN THEATER**

250 Main Street, Northport, NY 11768

631-261-2900

[www.engemantheater.com](http://www.engemantheater.com)

Hours: See website

Fee: See website

Children's Theater featuring Seussical: The Musical (May 18-June 30) and Finding Nemo Jr. (July 20- August 25). Also, there is a Musical Summer Camp!

### **JONES BEACH ENERGY AND NATURE CENTER**

Jones Beach State Park, 150 Bay Parkway, Wantagh, NY 11783

516-809-8222

[www.jonesbeachenc.org](http://www.jonesbeachenc.org)

Hours: 9 am - 4:30 pm daily

Fee: Free

The Jones Beach Energy & Nature Center is a one-of-a-kind educational institution dedicated to exploring relationships between human life, energy use, and environmental conservation. Website features the monthly programs and lectures.

## LAKELAND COUNTY PARK

Johnson Avenue, Islandia, NY 11749

631-853-2727

<http://www.suffolkcountyny.gov/Departments/Parks/Our-Parks/Lakeland-County-Park>

Hours: Call for more information.

Fee: Free

This 70 acre park includes a nature trail boardwalk over the headwaters of the Connetquot River, picnic area with gazebo, boardwalks, shuffleboard and basketball courts.

## LAVENDER BY THE BAY

Calverton Farm

47 Manor Road

Calverton, NY 11933

631-477-1019

[www.lavenderbythebay.com](http://www.lavenderbythebay.com)

Hours: Open 7 days a week 9 am - 6 pm throughout the summer. Timed ticket slots are required to entry for 1½ hour time slots. Tickets must be purchased online.

Fee: \$8 per person, under 6 years old is free. Check social media for more details.

New York's premier lavender farm and one of the largest in the USA. A family run farm, we have been growing the highest quality lavender on Long Island for over 15 years and in Calverton since 2018.

## LIDDLE BITES PLAY CAFÉ

132 East Park Avenue, Long Beach, NY 11561

516-442-3131

[www.liddlebites.com](http://www.liddlebites.com)

Hours: Open Play is available Mondays-Fridays. Check website for hours. Sign up online or drop in (drop ins are allowed if space is available).

Fee: \$12 per child, \$10 per sibling. This pricing is per visit.

Liddle Bites Play Café is a uniquely styled play space for kids. Known for a life size doll house and an indoor play space with imaginative play houses and shops. There is a range of toys and activities from crawlers to age 8.

## LONG ISLAND AQUARIUM

431 East Main Street, Riverhead, NY 11901

631-208-9200

[www.longislandaquarium.com](http://www.longislandaquarium.com)

Hours: Weekdays from 10 am - 4 pm, Saturday & Sunday from 10 am - 5 pm

Fee: See website.

Green Key & other discounts available.

[Discount tickets available at the Library.](#)

The Long Island Aquarium blends science and nature with myth to create an informative and entertaining environment for visitors of all ages.



## LONG ISLAND CHILDREN'S MUSEUM

11 Davis Avenue, Garden City, NY 11530

516-224-5800

[www.licm.org](http://www.licm.org)

Hours: See website

Fee: See website

[Museum Pass available from the Library.](#)

This is a hands-on museum filled with exhibits including bubbles, sand and a climbing station!

Come learn, play and explore.



## LONG ISLAND DUCKS

3 Court House Drive, Central Islip, NY 11722

631-940-DUCK(3825)

[www.liducks.com/home](http://www.liducks.com/home)

Hours: See website

Fee: See website

Check out your favorite Long Island minor league baseball team and their mascot, 'QuackerJack,' at the Bethpage Ballpark. Schedule, seating chart and ticket information on their website.



## **LONG ISLAND EXPLORIUM CHILDREN'S MUSEUM OF SCIENCE AND ENGINEERING**

Port Jefferson Harbor, 101 East Broadway, Port Jefferson, NY 11777

631-331-3277

[www.longislandexplorium.org](http://www.longislandexplorium.org)

Hours: See website

Fee: See website

**Museum Pass available from the Library.**

The Explorium has exhibits and workshops to spark inventive solutions. The future belongs to the curious.

## **LONG ISLAND GAME FARM**

489 Chapman Boulevard, Manorville, NY 11949

631-878-6644

[www.longislandgamefarm.com](http://www.longislandgamefarm.com)

Hours: See website

Fee: See website

The Long Island Game Farm Wildlife and Children's Zoo features hundreds of animals, red kangaroos, kinkajous, cougars, Barbados sheep, peacocks, and the only lemurs born and bred on Long Island.



## **LONG ISLAND MARITIME MUSEUM**

88 West Avenue, West Sayville, NY 11796

631-854-4974

[www.limaritime.org](http://www.limaritime.org)

Hours: Monday - Saturday 10 am - 4 pm

Fee: \$10.00 adults; \$8.00 children and seniors

**Museum Pass available from the Library.**

With a collection of over 10,000 objects, a rich archive of documents and photographs, and five historic buildings, the Museum is a treasure chest of Long Island history.

## **LONG ISLAND MUSEUM**

1208 Route 25A, Stony Brook, NY 11790

631-751-0066

[www.longislandmuseum.org](http://www.longislandmuseum.org)

Hours: Thursday - Sunday 12 noon - 5 pm

Fee: Adults \$10.00; children 6 and under & members FREE; students 6-17 years \$5.00; seniors \$7.00

**Museum Pass available from the Library.**

The Long Island Museum is a place to rediscover the richness of America's cultural heritage.



## **LONG ISLAND SALTY COVE**

646 Medford Avenue (Route 112), Patchogue, NY 11772

631-897-5910

[www.lisaltykidscope.org/](http://www.lisaltykidscope.org/)

Hours: See website. Special summer hours June 3 - August 30)

Fee: See website

5K square feet of sensory-friendly, imaginative, indoor playground center for ages birth through 6 years.

## **LONG ISLAND STEAMERS**

South Haven Park, Gerard Road Entrance, Brookhaven, NY 11719

631-345-0499

[www.lilivesteamers.org](http://www.lilivesteamers.org)

Hours: Typically the 2nd and last Sunday of each month from May until the end of October from 10:30 am - 3 pm. Check the calendar on their website, because there may be some exceptions to these dates.

Fee: There is no charge for rides. They do accept small donations of your choice.

This railroad model club has made mini trains for you and your kids can ride on! There is also a picnic area, as well as train items for sale.



### **MATTITUCK-LAUREL HISTORICAL SOCIETY AND MUSEUM**

Main Road (Route 25) at Cardinal Drive, Mattituck, NY 11952

631-298-5248

[www.mlhistoricalsociety.org](http://www.mlhistoricalsociety.org)

Hours: Open by appointment Saturday and Sunday from May through September.

Fee: Free, donations appreciated.

Buildings on the site include 2 houses (1799) and (1840), a schoolhouse (1846), milk house (circa 1850) and a farm outbuilding with 19th century farm implements and machines on display. Permanent exhibits also include American Indian artifacts recovered in Mattituck.

### **MICHAEL'S CRAFT STORE KIDS CLUB**

[www.michaels.com/classes](http://www.michaels.com/classes)

Hours: See website

Fee: See website

Kids Craft Creatology for ages 6+. In-store events for creative mini-makers.



### **MITCHELL PARK**

115 Front Street, Greenport, NY 11944

631-477-2200

[www.villageofgreenport.org/mitchell-park-greenport-village.php](http://www.villageofgreenport.org/mitchell-park-greenport-village.php)

Mitchell Park, described as the "jewel" of the Village of Greenport, is a four acre park located on the beautiful waterfront in the village. The park is home to the antique carousel that was donated by the Northrop Grumman Corporation. It also has an ice rink, blacksmith shop, camera obscura, and more.

### **MONTAUK POINT LIGHTHOUSE**

2000 Montauk Highway, Montauk, NY 11954

631-668-2544

[www.montauklighthouse.com](http://www.montauklighthouse.com)

Hours: See website

Fee: Adults \$15.00; seniors \$10.00; children \$5.00.

Parking fee \$8.00 (8 am – 4pm)

The Montauk Point Lighthouse is the oldest lighthouse in New York State.

This National Historic Landmark has been part of Long Island's land and seascape for over 200 years, and still serves as an active aid to navigation.



### **OLD BETHPAGE VILLAGE RESTORATION**

1303 Round Swamp Road, Old Bethpage, NY 11804

516-572-8409

[www.oldbethpagevillagerestoration.org](http://www.oldbethpagevillagerestoration.org)

Hours: Friday - Sunday from 10 am - 4 pm

Fee: Adults \$15, Children (5-12) \$12, Seniors (65+) \$12

**Museum Pass available from the Library.**

Where history comes alive! Explore various historic trade and craft demonstrations each day.

Discover our farm of domesticated animals and walk the beautiful historic homes and buildings.

### **OLD WESTBURY GARDENS**

71 Old Westbury Road, Old Westbury, NY 11568

516-333-0048

[www.oldwestburygardens.org](http://www.oldwestburygardens.org)

Hours: Open every day (except Tuesday) from 10 am - 6 pm

Fee: See website

**Museum Pass available from the Library.**

Old Westbury Gardens welcomes visitors of all ages for guided tours of the Westbury House, in-depth tours of the formal gardens, school visits, children's programs and events, family programs, museum exhibitions, classic car shows, indoor and outdoor activities.



### ONCE UPON A TREETOP

15 Dupont Street, Plainview, NY 11803

516-349-1140

[www.onceuponatreetop.com](http://www.onceuponatreetop.com)

Hours: See website

Fee: Two-hour sessions: Walkers \$20, Crawlers \$15, Infants \$10. One adult per child included.

An interactive city designed for young imaginations from birth to 8 years! LI's largest indoor playground.

### PARRISH ART MUSEUM

279 Montauk Highway, Water Mill, NY 11976

631-283-2118

[www.parrishart.org](http://www.parrishart.org)

Hours: See website for hours.

Fee: See website / Free admission for visitors 18 and under.

[Museum Pass available from the Library.](#)

Focusing on American art from the 19th century to the present, with a focus on Long Island's East End. Check the website for Family Fun Days and Festivals.



### PECONIC PADDLER

89 Peconic Avenue, Riverhead, NY 11901

631-727-9895

[www.peconicpaddler.com](http://www.peconicpaddler.com)

Hours: Call for hours.

Fee: Call for pricing.

The Peconic River is Long Island's largest river and is also one of its most historic and ecologically diverse. Rent a canoe, kayak or SUP board and take a trip down this shallow, slow-moving river. It is both an education and an adventure.



### PECONIC RIVER HERB FARM

2749 River Road, Calverton, NY 117933

631-369-0058

Hours: Open 7 days 10 am - 4 pm

Fee: Free

14 acres of picturesque landscape. Have a picnic or stroll and enjoy all that nature has to offer.

### QUOGUE WILDLIFE REFUGE

3 Old Country Road, Quogue, NY 11959

631-653-4771

[www.quogueliferefuge.org](http://www.quogueliferefuge.org)

Hours: See website

Fee: Free

[Museum Pass available from the Library.](#)

A 305-acre expanse of protected land with over seven miles of trails where you can explore a variety of habitats. There is also a Distressed Wildlife Complex which houses animals that have been injured and would not be able to survive in the wild.

### RAILROAD MUSEUM OF LONG ISLAND

Greenport

4th Street at the Tracks

Greenport, NY 11944

631-477-0439

[www.rmli.us](http://www.rmli.us)

Hours: See website

Fee: See website

Riverhead

416 Griffing Avenue

Riverhead, NY 11901

631-727-7920



GREENPORT: 1890 LIRR freight station has photos, displays, uniforms, operating control tower, and a railroad model of Greenport. Outside is a 1907 snowplow, "Jaws," and a 1925 wooden caboos. There is also a gift shop. RIVERHEAD: Retired railroad equipment on display, 2 LIRR diesel locomotives, the first LIRR all-aluminum double-decker passenger car, cars used in the LIRR steam-to-diesel conversion ceremony in 1955, and 2 retired M-1 cars. Ride the 1964-65 World's Fair mini train. Indoor museum features photos, railroad memorabilia and more.

### SAFARI ADVENTURE

1074 Pulaski Street, Riverhead, NY 11901  
631-727-4386  
www.thesafariadventure.com  
Hours: Open everyday from 11 am - 6 pm  
Fee: See website



They offer a four-level playground where children can get plenty of exercise in the most exciting setting possible. The play equipment is perfect for children between the ages of 1 and 10, They also have enormous bouncers and a full set of over 30 video games and skill games to appeal to children of all ages.

### SEATUCK ENVIRONMENTAL CENTER

550 South Bay Avenue, Islip, NY 11751  
631-581-6908  
www.seatuck.org  
Hours: Call for more information.  
Fee: Call for information



The 70-acre property, which contains diverse wetland and upland forest habitats, is open for hiking, birding, etc.

### SKY ZONE TRAMPOLINE PARK

111 Rodeo Drive, Deer Park, NY 11717  
631-402-5430  
www.skyzone.com  
Hours: See website  
Fee: See website



Sky Zone is an indoor trampoline park. Experience WOW- the weightlessness of bouncing, flipping and landing in a pit piled with 10,000 foam cubes.

### SMITHTOWN HISTORICAL SOCIETY

239 East Main Street, Smithtown, NY 11787  
631-265-6768  
www.smithtownhistorical.org  
Hours: Monday - Friday from 9 am - 5 pm  
Fee: Call for more information.

We actively promote the importance of history and preservation, at three locations: Obadiah Smith House, Caleb Smith House, and the 20-acre historic Village of the Branch site.

### SOUTH FORK NATURAL HISTORY MUSEUM AND NATURE CENTER

377 Bridgehampton/Sag Harbor Turnpike, Bridgehampton, NY 11967  
631-537-9735  
www.sofa.org  
Hours: 10 am - 4 pm  
Fee: \$10 adults, \$7 per child 3-12 years of age, 2 and under free.



**Museum pass available at the Library.**

Come see nature exhibits brought indoors, interactive exhibits, including a marine touch tank and go on a nature walk! See live native reptiles and amphibians.

### SOUTH SHORE NATURE CENTER

130 Bayview Avenue, East Islip, NY 11730  
631-581-6908  
www.seatuck.org/index.php/nature-centers/south-shore-nature-center  
Hours: Weekdays from 9 am - 5 pm  
Fee: Free.

The 200-acre preserve stretches to the shores of the Great South Bay. They have trails and boardwalks that afford visitors miles of access to the property's beauty and ecological diversity. The visitor's center provides interactive exhibits and collections of both live animals & mounted wildlife specimens.

### **SPLISH SPLASH**

2549 Splish Splash Drive, Calverton, NY 11933

631-727-3600

www.splishsplash.com

Hours: See website

Fee: See website **Discount tickets available at the Library.**

Splish Splash has 96 exciting acres of total water fun for the whole family. 20 water slides, two wavepools, a large kiddie area, a lazy river and more.



### **ST. JAMES GENERAL STORE**

516 Moriches Road, St. James, NY 11780

631-854-3740

www.facebook.com/St.JamesGeneralStore

Hours: 10 am - 5 pm 7 days a week

Fee: Call for details.

The oldest continuously-operating general store in the United States. Currently ongoing interpretive programs at the store include popular period-craft demonstrations, or events held each weekend, with quarterly festivals or holiday celebrations.

### **STONY BROOK GRIST MILL**

Harbor Road off Main Street

Stony Brook, NY 11790

631-751-2244

<https://www.stonybrookvillage.com/what-to-do-attractions/stony-brook-grist-mill-circa-1751/>

Hours: Sundays from 1 pm – 4:30 pm

Fee: \$4 for adults and \$2 for children.

Long Island's most completely equipped working Grist Mill. Sample a slice of colonial life while touring a working grist mill. There is also a duck pond where you can feed the ducks and a walking trail.

### **SUFFOLK COUNTY FARM & EDUCATION CENTER**

350 Yaphank Avenue, Yaphank, NY 11980

631-852-4600

www.ccesuffolk.org/suffolk-county-farm

Hours: 7 days a week from 9 am - 3 pm

Fee: Free.

Visitors are able to see a century-old working farm and visit with the farm animals and feed them.



### **SUFFOLK COUNTY POLICE DEPARTMENT MUSEUM**

30 Yaphank Avenue, Yaphank, NY 11980

631-852-6011

www.facebook.com/watch/?y=10160267039450441

Hours: Monday-Friday from 8:30 am - 4:30 pm

Fee: Free.

The Police Museum traces the evolution of policing in Suffolk from the 16th century Sheriff to the present day law enforcement professional. Featured are: interpretive displays such as the 1925 station house, Constable Miller's 1915 Traffic Booth, the old Riverhead Jail and a talking 1960 Police Car and Police Booth depicting the first year of operations of the County Police.

### **SWEETBRIAR NATURE CENTER**

62 Eckernkamp Drive, Smithtown, NY 11787

631-979-6344

www.sweetbriarnc.org

Hours: Nature Center & Preserve Open Daily 9 am - 4:30 pm

Outdoor Butterfly Vivarium 10 am - 4 pm; 2nd week of June - September, weather dependent

Fee: Call for details.

Includes 54 acres, hiking with views of the Nissequogue River, and butterfly house.

Mock rain forest. Wildlife rehabilitation with eagles, hawks, and owls.

### THEATRE THREE

412 Main Street, Port Jefferson, NY 11777  
631-928-9100  
www.theatrethree.com  
Hours: See website  
Fee: See website



For 40 years, Theatre Three, one of Long Island's not-for-profit theatres, has brought the best of Broadway to Main Street. Summer shows for children.

### TIKI ACTION PARK

1878 Middle Country Road, Centereach, NY 11720 (behind Burger King)  
631-471-1267  
www.tikiactionpark.com  
Hours: See website  
Fee: See website  
Best of Long Island winner for 13 years! Enjoy miniature golf, go-karts, arcade and laser tag.



### U-PICK FARMS ON LONG ISLAND

www.pickyourown.org/nylongisland.htm  
Find a list of farms where you can pick from apples to zucchini.

### URBAN AIR

3147 Middle Country Road, Lake Grove NY 11755  
631-861-4125  
Hours: See website  
Fee: See website

A trampoline and adventure park. There are tons of activities including climbing walls, bumper cars, rope course and more.

### VANDERBILT MANSION/MUSEUM/PLANETARIUM

180 Little Neck Road, Centerport, NY 11721  
631-854-5579  
www.vanderbiltmuseum.org  
Hours: See website  
Fee: See website



**Museum Pass available from the Library.**

This museum is a unique combination of mansion, marine and natural history museum, planetarium and park. It is dedicated to the education and enjoyment of the people of Long Island and beyond.

### WALT WHITMAN BIRTHPLACE STATE HISTORIC SITE

246 Old Walt Whitman Road, Huntington Station, NY 11746  
631-427-5240  
www.waltwhitman.org

Hours: Summer Hours: June 15 through Labor Day Every day from 11 am - 4 pm  
Fee: \$10 Adults, \$8 Students, Under age 5 free

Visit the 19th century farmhouse with 19th century furnishings and unusual architecture. Guided tours, audio-visual show, library, museum shop/bookstore and picnic area.

### WERTHEIM NATIONAL WILDLIFE REFUGE

340 Smith Road, Shirley, NY 11967  
631-286-0485  
www.fws.gov/refuge/wertheim  
Hours: See website  
Fee: Free

Wertheim National Wildlife Refuge is home to the refuge complex headquarters and visitor center. Visit the nature store or hike almost six miles of trails.



## THE WHALING MUSEUM & EDUCATION CENTER

301 Main Street, Cold Spring Harbor, NY 11724

631-367-3418

<http://www.cshwhalingmuseum.org>

Hours: See website

Fee: See website

Museum Pass available from the Library.

Their current exhibits display the whaling history of Cold Spring Harbor and Long Island, and their events highlight the relationship between people and the ocean. There are kids programs all summer long.



COLD SPRING HARBOR  
SEA | REFLECT | EXPLORE | PROTECT

## WHITE POST FARMS OF MELVILLE

250 Old Country Road, Melville, NY 11747

631-351-9373

[www.whitepostfarms.com](http://www.whitepostfarms.com)

Hours: 10 am - 5 pm daily

Fee: See website

Along with our large family of animals, our farm provides a playground of fun for families and friends to get together for an entire fun-filled day!

## WOOD KINGDOM EAST

407 Middle Country Road, Coram, NY 11727

631-451-2200

[www.woodkingdomeast.com](http://www.woodkingdomeast.com)

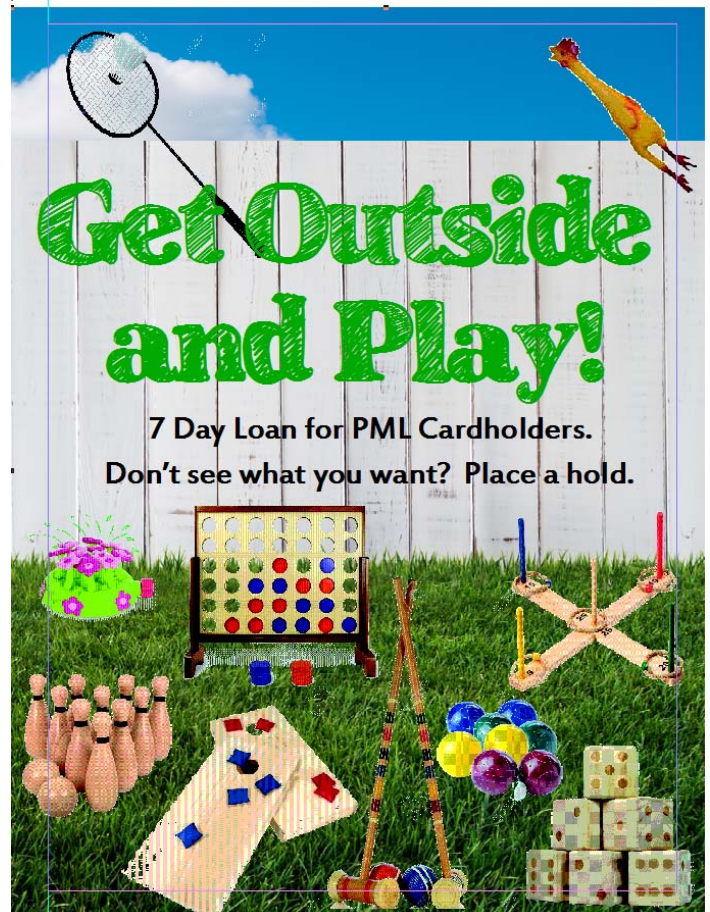
Hours: Open Play Monday-Friday 12-5 pm - Check Facebook for weekend and holiday hours

Fee: \$15 per child, adults are free

Include open play on various playground sets, bouncer, climbers and indoor swing sets.



Visit our new space where children can play, create, explore and learn about all things S.T.E.A.M.!



# DROP IN FOR THESE GREAT PROGRAMS

No registration required!



## PAINT YOUR OWN ADVENTURE: FAMILY ART EXHIBIT

Starting Saturday, June 1, pick up a kit and return your completed artwork by June 21.  
For families. Paintings will be displayed in the Claire Davidson Siegel Gallery  
from July 1 through August 30. Kits are limited. While supplies last.

## BUTTERFLY RELEASE PARTY • Friday, June 21 from 4:30-5:30 pm

For families with children 3 years and up. Come celebrate our hatched butterflies as we send them off with  
some fun games and activities! **This program will be held at the Medford Branch.**

## TOUCH-A-TRUCK • Saturday, June 29 from 10 am-12 pm

For families. Be a part of our annual Touch-a-Truck where you'll have an opportunity to see, touch and  
explore heavy machinery and meet the people who build, protect and serve our community. Fun for the  
whole family! **This program will take place at the Patchogue-Medford High School.**

## MESSY MEDFORD MONDAY • Monday, July 8 and/or August 12 from 10:30-11:30 am

For ages 2½-5 years. Dress for a mess and some fun sensory play!

**This program will be held at the Medford Branch.**

## DAVIS PARK STORYTIMES • Tuesdays, July 9, 16, 23, 30 and/or August 6 from 11-11:30 am

For families. Meet us at Davis Park, Fire Island. Take a break from the beach and join us on the boardwalk  
for a splashy storytime in the shade!

## SUNSHINE & STORIES IN THE PARK

Thursday, July 11 from 10:30-11:30 am at Father Tortora Park in Patchogue

Thursday, August 8 from 10:30-11:30 am at Eagle Estates Park in Medford

For families. Enjoy an outdoor storytime at the park with Miss Mary.

## TOUR THE WORLD • Friday, July 12 from 2-5 pm

For families with children 3 years and up. Go for an adventure around the world by trying international crafts,  
games and snacks.

## SPONGEBOB WATCH PARTY • Saturday, July 13 from 1:30-3 pm

For families with children of all ages. Celebrate the birthday of SpongeBob with a showing of The  
SpongeBob SquarePants Movie (PG)!

## METAL PHOTO MEMORIES • Wednesday, July 17 from 11 am - 7 pm.

For all ages. Kids should bring an adult helper. Stop by the new **Medford Branch** any time between 11 am  
and 7 pm to create a photo, artwork, or even a sign on an 8x10" metal backdrop using the sublimation  
printer and heat press. All supplies included.

## SUMMER SPARKS • Thursday, August 1 from 10 am-4 pm

For families with children entering grades K and up. Join the Long Island Explorium for "Summer Sparks:  
Empowering Futures in STEM" at our Library! Discover the exciting world of science, technology,  
engineering, and mathematics (STEM) through hands-on exhibits and activities.

## TALENT SHOW AT CIRCUS ON MAIN • Friday, August 2 at 6 pm

For families. Sing, dance and cheer along during an evening of performances right on Main Street, Patchogue!

## STUDIO ORIGAMI: LEGEND OF THE PAPER CRANE • Thursday, August 8 from 1-3 pm

For families with children in grades 1-6. Origami supplies will be available for crafting everything from  
Paper Cranes to Jumping Frogs!



# WHAT'S HAPPENING IN YOUR TOWN

## SUMMER CONCERT SERIES AT SHOREFRONT PARK



**Milagro**

Saturday, July 6  
7 - 9p

**That 70's Band**

Friday, July 26  
7 - 9p

**Lamar Peters**  
"The Ultimate Elvis Tribute"

Saturday, August 3  
7 - 9p



**Amber Ferrari**  
Joplin's "Pearl" & "Benatar"

Saturday, August 10  
7 - 9p

**Kids Dance Party**  
Feat. Albert Lee Music

Friday, August 16  
7 - 9p

**Twenty Highview Dance**  
Funk RNB Soul Blend

Saturday, August 17  
7 - 9p



**TOWN OF BROOKHAVEN  
POOLS**

[www.brookhavenny.gov/234/Pools](http://www.brookhavenny.gov/234/Pools)

**TOWN OF BROOKHAVEN  
PARKS DEPARTMENT**

[www.brookhavenny.gov/216/  
Parks-Recreation](http://www.brookhavenny.gov/216/Parks-Recreation)

**FREE**

**MEDFORD MEMORIAL PARK  
SUMMER CONCERT SERIES  
MAY 24 - SEPT 6 • 7-9PM**

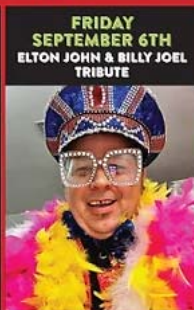
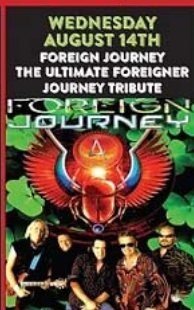
Brought to you by



**MEDFORD ROCKS!**

[MEDFORDCHAMBEROFCOMMERCE.COM](http://MEDFORDCHAMBEROFCOMMERCE.COM)

**50/50 + 2nd Prize: \$50 Rudi's Pub Gift Card**  
Proceeds to Benefit The Chamber Fund





PATCHOGUE-MEDFORD  
**LIBRARY**  
54-60 East Main Street, Patchogue, NY 11772  
(631) 654-4700 • [www.pmlib.org](http://www.pmlib.org)