

SUMMER FUN FOR KIDS

2025



AROUND LONG ISLAND

parks • museums • historical sites • arts • zoos • and much more!

PATCHOGUE-MEDFORD
LIBRARY

54-60 East Main Street, Patchogue, NY 11772
(631) 654-4700 • www.pmlib.org

PLANNING A “STAYCATION” OR LOOKING FOR SOMETHING FUN TO DO WITH THE KIDS THIS SUMMER?

The Patchogue-Medford Library has put together this fun activity booklet for you and your family to explore! Inside you will find many local activities and museums, as well as other great spots to discover around Long Island.

In addition to the Long Island attractions highlighted in this booklet, don't forget you may also use your library card to check out a **Museum Pass** that offers discounts and free admission to New York City museums and gardens including:

Brooklyn Botanic Garden • Guggenheim Museum
Children's Museum of Manhattan • Long Island Explorium
Suffolk County Vanderbilt Museum • and many more!

Visit our website www.pmlib.org to make a reservation or for more information.



Discount tickets are available for purchase at the Main Desk for the following:

Adventureland • Long Island Aquarium • Long Island Science Center
American Museum of Natural History • Splish Splash • Adventure Park of L.I.
Viking Fleet • Gateway Playhouse • Patchogue Theatre • The Suffolk Theatre
LIRR Tickets to New York City and the Wildlife Conservation Society
(which includes the Bronx Zoo, the Central Park Zoo and the New York Aquarium)

Payments can be made by cash or credit card.



JOIN the 2025 SUMMER READING PROGRAM to keep your reading skills strong!

JUNE 23–AUGUST 16
Register beginning June 2.

COLOR > YOUR < WORLD
WITH PML

STRIVE FOR FIVE

Visit starting JUNE 23, during REGULAR LIBRARY HOURS!

Scribble Squad
AGES INFANT–PRE-K
For every five books you read, earn raffle tickets and a chance to spin our colorful prize wheel!

MASTERPIECE MAKERS
GRADES K–6
Read your favorite books and then head over to our Story Chat & Game area to share what you've read and enjoy hands-on fun! For every five books you finish, you'll earn raffle tickets and a chance to spin our prize wheel.

Monday through Friday at 12 pm • June 30 – August 15

FREE LUNCH for KIDS at the LIBRARY!

Children and Teens ages 18 and under are invited to stop by the Main Building for lunch and some fun!

Sponsored by



1920s ANTIQUE CAROUSEL JESS OWEN CAROUSEL HOUSE

Mitchell Park on Front Street, Greenport, NY 11944

631-447-0248

www.villageofgreenport.org/carousel-greenport-village.php

Hours: 9 am – 8 pm daily

Fee: \$3.00 per ride

Featuring vintage painted horses, the carousel offers free rides to the lucky few who can grab a brass ring.

Open all summer through Labor Day.



ADVENTURELAND

2245 Route 110 (Broad Hollow Road) Farmingdale, NY 11735

631-694-6868

www.adventureland.us

Hours: See website

Fee: See website. Admission is available online and at the park. Discount tickets available at the Library.

Adventureland has thrill rides, water rides, family rides, kiddie rides and so much more.

THE ADVENTURE PARK AT LONG ISLAND

75 Colonial Spring Road Gate #3, Wheatley Heights, NY 11798

631-983-3844

www.longislandadventurepark.org

Hours: Wednesday - Sunday 10 am - 6 pm

Fee: See website

A new kind of recreation, adventure in the trees! Consists of over 140 platforms installed in the trees and connected by various configurations of cable, wood and rope to form bridges and zip lines. For adults & children 3 years old and up. Discount tickets available at the Library.



ANIMAL FARM PETTING ZOO & FAMILY PARK

296 Wading River Road, Manorville, NY 11949

631-878-1785

www.afpz.org

Hours: 11 am - 5 pm 7 days a week

Fee: Adults \$18.95, Children 2-16, \$16.95, Seniors 65+ \$16.95

Children under 2 are free

10 acres and hundreds of animals to pet and feed. Part of a rescue shelter, this family friendly zoo offers pony rides, a puppet theater, picnic areas and a baby animal farm.



AVALON PARK & PRESERVE

200 Harbor Road, Stony Brook, NY 11790

631-689-0619

www.avalonparkandpreserve.org

Hours: Summer (June-August) 6 am -8 pm (Closed Mondays)

Fee: Free

Avalon is a re-creation of the natural environment that greeted the first indigenous people to settle in New York State. 140 acres of natural conservation area with five diverse natural habitats.

BATTER UP BETHPAGE MINI GOLF

130 Hicksville Road, Bethpage, NY 11714

516-731-2020

www.batterupli.com

Hours: Weather permitting - Weekdays 10 am-10 pm, Saturday 9 am-9 pm, Sunday 9 am-9 pm

Family-run, family-friendly recreation center.

BAYARD CUTTING ARBORETUM

440 Montauk Highway, Great River, NY 11739

631-581-1002

www.bayardcuttingarboretum.com

Hours: 9 am - 5 pm Tuesday-Sunday (April - October)

Fee: Entrance fee of \$8 per vehicle. Free with Empire Pass. **Empire Pass available at the Library.**

The Arboretum is a massive park filled with beautiful trees & plantings. There are Pre-K & elementary programs available. Activities such as biking, picnicking, sports, bathing and games are not permitted.



BAYVILLE ADVENTURE PARK

8 Bayville Avenue, Bayville, NY 11709

516-624-7433

www.bayvilleadventurepark.com

Hours: Saturdays and Sundays 11 am - 6 pm

Fee: See website

The Bayville Adventure Park offers various activities such as miniature golf, rock climbing, bumper boats, funhouses, and more.

BENNER'S FARM

56 Gnarled Hollow Road, East Setauket, NY 11733

631-689-8172

www.bennersfarm.com

Hours: See website

Fee: See website

Private 15 acre family homestead offering summer camps and workshops.

Benner's Farm has been voted **Best Farm on L.I. for 2025!**

THE BIG DUCK

1012 Route 24, Flanders, NY 11901

631-852-3377

www.bigduck.org

Hours: 10 am - 5 pm Monday-Friday / 10 am - 5 pm Sunday / 10 am - 3 pm Saturday

Fee: Free

In 1931, Riverhead duck farmer Martin Maurer and his wife Jeule decided to construct a giant duck-shaped duck shop. They hoped to sell the Peking ducks they raised to passing motorists along Riverhead's West Main Street. The Big Duck is now open to the public as a gift shop.



BROOKHAVEN NATIONAL LABORATORY - SUMMER SUNDAYS

William Floyd Parkway (County Road 46). Upton, NY 11974

631-344-2651

www.bnl.gov/sundays

Fee: Free

For several Sundays this summer, the Brookhaven Lab will be bringing their science into communities with Summer Sundays in Suffolk. See website for more details. June 29 - Family Fun. July 13 - Dazzling Discoveries. August 3 - Fascinating Physics. September 14 - Discovery and Innovation.

CALEB SMITH STATE PARK PRESERVE

581 W. Jericho Turnpike, Smithtown, NY 11787

631-265-1054

www.parks.ny.gov/parks/calebsmith/

Hours: Tuesday - Sunday 9 am - 5 pm

Fee: \$8.00 per car, or you can use your Empire Pass. **Empire Pass available at the Library.**

Much of the Preserve's 543 acres is undeveloped, allowing visitors to explore its many different habitats, including freshwater wetlands, ponds, streams, fields and upland woods.

CAPTREE STATE PARK

3500 East Ocean Parkway, Bay Shore, NY 11706

631-669-0449

www.parks.ny.gov/parks/65

Hours: Park closes daily at 10 pm

Fee: \$8.00 per car, or you can use your Empire Pass. **Empire Pass available at the Library.**

Home to the largest public fishing fleet on Long Island, Captree State Park is a fishing haven and a picnicker's delight, located on the eastern tip of Jones Island at the end of the Ocean Parkway.



CARRIAGE MUSEUM - LONG ISLAND MUSEUM

1200 Route 25A, Stony Brook, NY 11790

631-751-0066

www.longislandmuseum.org/exhibitions/the-carriage-museum/

Hours: Thursday - Sunday from 12-5 pm

Fee: \$15 per person, \$10 for seniors (62 and older) \$10 for students ages 6-17 and college students with ID.

Person with disability \$5 (personal care assistants are admitted free). Children under 6 are free and active and retired military are free.

The Long Island Museum is dedicated to inspiring people of all ages with an understanding and enjoyment of American art, history and carriages as expressed through the heritage of Long Island and its diverse communities.

CATHEDRAL PINES COUNTY PARK

116 Yaphank-Middle Island Road, Middle Island, NY 11953

631-852-5502

www.suffolkcountyny.gov/Departments/Parks/Our-Parks/Cathedral-Pines-County-Park

Hours: Dawn till Dusk

Fee: \$7 with Green Key, \$15 without Green Key

This 320-acre site is situated along the headwaters of the Carmans River. Picnic sites, bicycling, camping and hiking.

CHILDREN'S MUSEUM OF THE EAST END

376 Bridgehampton/Sag Harbor Turnpike, Bridgehampton, NY 11932

631-537-8250

www.cmee.org

Hours: Monday- Sunday 9:30 am - 4:30 pm. Closed Thursdays.

Fee: \$19.00 non-members; free for members

Museum pass available at the Library.

CMEE offers hands on exhibits and educational programs aimed at kids, plus family events.



CM PERFORMING ARTS CENTER

931 Montauk Highway, Oakdale, NY 11769

631-218-2810

www.cmpac.com

Hours: See website

Fee: See website **Discount tickets available at the Library.**

The CM Performing Arts Center is a not-for-profit charitable organization which relies on community and individual support. Enjoy great local theater for a good cause. The center offers classes and camp.

Children's Theatre: Junie B. Jones, The Musical July 12-27. Madagascar - A Musical Adventure August 3-30.

See website to purchase tickets.

COLD SPRING HARBOR FISH HATCHERY & AQUARIUM

1660 Route 25A, Cold Spring Harbor, NY 11724

516-692-6768

www.cshfishhatchery.org

Hours: Daily 10 am - 5 pm. Saturday & Sunday till 6 pm. during June, July & August

Fee: Free to Members & children under age 2; \$7.00 adults, \$5.00 ages 3-12, \$4.00 Seniors 65+,

The Hatchery is proud to have the largest living collection of New York State freshwater reptiles, fish and amphibians. Visit the two aquarium buildings and eight outdoor ponds.



CONNETQUOT RIVER STATE PARK PRESERVE

3525 Sunrise Highway, Oakdale, NY 11769

631-581-1005

www.parks.ny.gov/parks/8

Hours: 8 am – 6 pm Tuesday-Sunday (Closed Monday)

Fee: \$8.00 per car, or you can use your Empire Pass.

The Preserve has 50 miles of hiking, horseback riding, cross-country ski and nature trails, as well as fishing (by permit only) on the Connetquot River.

CRADLE OF AVIATION MUSEUM

Charles Lindbergh Boulevard, Garden City, NY 11530

516-572-4111

www.cradleofaviation.org

Hours: 10 am - 5 pm Tuesday-Sunday

Fee: See website

The Cradle of Aviation Museum is home to one of the world's most diverse and outstanding aerospace collections. You can see over 75 aircraft and space craft – from hot air balloons to jet aircraft and an actual lunar module! There is an immersive full-dome planetarium show on the weekends.

Museum pass available at the Library.



CUSTER INSTITUTE & OBSERVATORY

1115 Main Bayview Road, Southold, NY 11971

631-765-2626

Hours: Saturday evenings from dusk to midnight (weather permitting).

Fee: Small donation shows your support.

Long Island's oldest public observatory. Lectures, classes and other special events.

EAST END SEAPORT MUSEUM & MARINE FOUNDATION

3rd Street, at the Ferry Dock, Greenport, NY 11944

631-477-2100

www.eastendseaport.org

Hours: Fridays, Saturdays and Sundays from 10 am - 4 pm

Fee: Free (\$2.00 suggested donation)

The museum boasts an array of exhibits on the maritime heritage of the area, including displays on the Greenport menhaden fishing industry, the oyster industry, lighthouse lenses, a model ship of the USS Ohio and more. Visit the Village Blacksmith Shop and watch a real blacksmith at work.



EISENHOWER PARK

Merrick and Stewart Avenues, East Meadow, NY 11554

516-572-0347

www.nassaucountyny.gov/2797/Eisenhower-Park

Hours: Call for more information.

Fee: Call for more information.

The 930-acre park offers a full range of athletic and family activities, including a pool, picnic areas, summertime entertainment, playgrounds, fitness trails and more.

ELIZABETH A. MORTON NATIONAL WILDLIFE REFUGE

2595 Noyack Road, Sag Harbor, NY 11963

631-286-0485

www.fws.gov/refuge/elizabeth-alexandra-morton

Hours: Sunrise to Sunset

Fee: \$4.00 per vehicle

This refuge is a breath-taking 187-acre peninsula home to a variety of wildlife and habitats on the South Fork. Observe wildlife up close, bring seeds and feed the birds.



FIRE ISLAND LIGHTHOUSE

Robert Moses Causeway, Bay Shore, NY 11706

631-583-5901

www.fireislandlighthouse.com

Hours: Open daily from 10 am - 4 pm. Tower closes at 3:30 pm

Fee: \$10 Adults. \$5 Seniors (65 and older). \$5 Child (12 and under - must be 42" tall).

Active Military personnel - free with ID. \$2 Members. Scout Groups \$5 - reservations required.

Experience Fire Island's natural beauty and Maritime History. Explore the nature trails, the bay and ocean that surround the lighthouse.

FLIGHT ADVENTURE PARK

1850 Lakeland Avenue, Ronkonkoma, NY 11779

631-619-6000

www.flightadventurepark.com

Hours: Sunday - Thursday 11 am-8 pm / Friday & Saturday 10 am-9 pm

Fee: See website

An indoor trampoline park contains over 16,000 square feet of jumping surface, including a foam pit with 3 lanes, 3 dodgeball courts and 2 basketball slam dunk courts.

GATEWAY PLAYHOUSE

215 South Country Road, Bellport, NY 11713

631-286-1133

www.thegateway.org

Hours: See website

Fee: See website

Gateway Playhouse is Long Island's oldest summer theatre and one of the foremost, respected summer theatres in the US. Acting and musical theater classes for kids and adults. Exciting summer shows: The Lion King Jr., Big Bubble Bonanza and The Sponge Bob Musical.

Discount tickets available at the Library.



GREATER PATCHOGUE HISTORICAL SOCIETY/COMMUNITY MUSEUM

Teen Center at the Patchogue-Medford Carnegie Library

160 West Main Street, Patchogue, NY 11772

631-804-9269 www.greaterpatchoguehistoricalsociety.org

Hours: Friday and Saturday 12-3 pm

Fee: Free

Tells the story of Patchogue's development from early settlement to its growth as a vibrant community. See historic and vintage photo, maps, artifacts and more!



GRUMMAN MEMORIAL PARK

4670 NY-25, Calverton, NY 11933

631-369-1826

www.grummanpark.org

Hours: 9 am - 5 pm daily

Fee: Free

This park pays tribute to the incredible advances in aviation and aerospace that took place on Long Island. It is situated on the former Grumman Aerospace Flight Test Facility in Calverton.



HARBES FAMILY FARM

715 Sound Avenue, Mattituck, NY 11952

631-482-7641

www.harbesfamilyfarm.com

Hours: Monday-Friday 10 am-6 pm, Saturday & Sunday 9 am-6 pm

Fee: Free

Visit this family farm and enjoy kid's activities, barnyard adventures and delicious treats.

Museum Pass available from the Library for Harbes Barnyard Adventure.

HECKSCHER STATE PARK

Heckscher Parkway, East Islip, NY 11730

631-581-2100

www.parks.ny.gov/parks/136/details.aspx

Hours: Open 7 days from sunrise to sunset

Fee: Between \$8-10, Free with Empire Pass. (Empire Pass available at the Library.)

Twenty miles of trails attract hikers and bicyclists. There are picnic areas, a boat launch ramp, playing fields, playground and 69 camp sites.

HERITAGE PARK

633 Mount Sinai-Coram Road, Mt. Sinai, NY 11766

631-403-4846

www.brookhavenny.gov/facilities/facility/details/Heritage-Park-Wedge-30

Heritage Park offers two separate playgrounds, There is a smaller playground for children up to age 5, with climbing apparatuses, and a large one with a rock wall and a number of slides. Scattered benches and tables give parents places to lounge. Heritage is one of only a handful of parks in its area to offer ball fields and a walking/jogging/bike trail. On the grounds, the Heritage Center offers classes and events, hosts festivals and movie nights, and is available to rent for private parties. There are also community gardens and beautiful landscaping, plus a small waterfall. A splash park and concession stand complete the amenities.

HOLTSVILLE ECOLOGY CENTER & ANIMAL PRESERVE

249 Buckley Road, Holtsville, NY 11742

631-451-5330

www.brookhavenny.gov/197/Holtsville-Ecology-Site

Hours: Open daily 10 am - 4 pm. May 27th-September 29th

Fee: \$5 parking fee per car.

Features an exercise trail fitness course, zoo and ecology center, ecology exhibits and tours, free compost, greenhouses, a picnic area and triple pool complex.



HOME DEPOT – KIDS WORKSHOP

Any Home Depot location

www.homedepot.com/workshops

Pick up your free Kids Workshop Kit on the first Saturday of each month from 9 am - 12 pm - while supplies last.



JOHN W. ENGEMAN THEATER

250 Main Street, Northport, NY 11768

631-261-2900

www.engemantheater.com

Hours: See website

Fee: See website

Children's Theater featuring Madagascar: A Musical Adventure - July 19 through August 24.

Also, there is a Musical Summer Camp!

LAKELAND COUNTY PARK

Johnson Avenue, Islandia, NY 11749

631-853-2727

www.suffolkcountyny.gov/Departments/Parks/Our-Parks/Lakeland-County-Park

Hours: Call for more information.

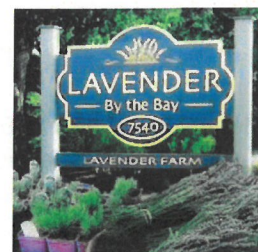
Fee: Free

This 70 acre park includes a nature trail boardwalk over the headwaters of the Connetquot River, picnic area with gazebo, boardwalks, shuffleboard and basketball courts.

LAVENDER BY THE BAY

Calverton Farm
47 Manor Road
Calverton, NY 11933
631-477-1019

East Marion
7540 Main Road
East Marion, NY 11939



www.lavenderbythebay.com

Hours: Open 7 days a week 9 am - 6 pm throughout the summer.

Timed ticket slots are required to entry for 1½ hour time slots.

Tickets must be purchased online.

Fee: \$8 per person, under 6 years old is free. Check social media for more details.

New York's premier lavender farm and one of the largest in the USA. A family run farm, we have been growing the highest quality lavender on Long Island for over 15 years and in Calverton since 2018.

LIDDLE BITES PLAY CAFÉ

132 East Park Avenue, Long Beach, NY 11561

516-442-3131

www.liddlebites.com

Hours: Open Play is available Mondays-Fridays. Check website for hours. Sign up online or drop in (drop ins are allowed if space is available).

Fee: \$15 per child, \$12 per sibling. This pricing is per visit.

Liddle Bites Play Café is a uniquely styled play space for kids. Known for a life size doll house and an indoor play space with imaginative play houses and shops. There is a range of toys and activities from crawlers to age 8.

LONG ISLAND AQUARIUM

431 East Main Street, Riverhead, NY 11901

631-208-9200

www.longislandaquarium.com

Hours: Weekdays from 10 am - 4 pm, Saturday & Sunday from 10 am - 5 pm

Fee: See website.

Green Key & other discounts available.

Discount tickets available at the Library.

The Long Island Aquarium blends science and nature with myth to create an informative and entertaining environment for visitors of all ages.



LONG ISLAND CHILDREN'S MUSEUM

11 Davis Avenue, Garden City, NY 11530

516-224-5800

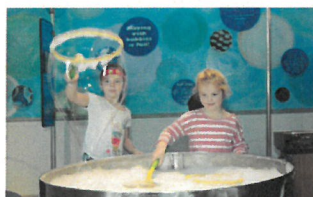
www.licm.org

Hours: Tuesday - Sunday 10 am - 5 pm

Fee: See website

Museum Pass available from the Library.

This is a hands-on museum filled with exhibits including bubbles, sand and a climbing station! Come learn, play and explore.



LONG ISLAND DUCKS

3 Court House Drive, Central Islip, NY 11722

631-940-DUCK(3825)

www.liducks.com/home

Hours: See website

Fee: See website

Check out your favorite Long Island minor league baseball team and their mascot, 'QuackerJack,' at the Bethpage Ballpark. Schedule, seating chart and ticket information on their website.



LONG ISLAND EXPLORIUM CHILDREN'S MUSEUM OF SCIENCE AND ENGINEERING

Port Jefferson Harbor, 101 East Broadway, Port Jefferson, NY 11777

631-331-3277

www.longislandexplorium.org

Hours: See website for summer hours

Fee: \$6.00 children; \$8.00 adults

Museum Pass available from the Library.

The Explorium has exhibits and workshops to spark inventive solutions. The future belongs to the curious.

LONG ISLAND GAME FARM

489 Chapman Boulevard, Manorville, NY 11949

631-878-6644

www.longislandgamefarm.com

Hours: See website

Fee: See website

The Long Island Game Farm Wildlife and Children's Zoo features hundreds of animals, red kangaroos, kinkajous, cougars, Barbados sheep, peacocks, and the only lemurs born and bred on Long Island.



LONG ISLAND MARITIME MUSEUM

88 West Avenue, West Sayville, NY 11796

631-854-4974

www.limaritime.org

Hours: Monday - Saturday 10 am - 4 pm

Fee: \$10.00 adults; \$8.00 children and seniors

Museum Pass available from the Library.

With a collection of over 10,000 objects, a rich archive of documents and photographs, and five historic buildings, the Museum is a treasure chest of Long Island history.

LONG ISLAND MUSEUM

1208 Route 25A, Stony Brook, NY 11790

631-751-0066

www.longislandmuseum.org

Hours: Thursday 11:30 am-7 pm, Friday-Sunday 12 noon-5 pm

Fee: Adults \$15.00; children 6 and under & members FREE; students 6-17 years \$10.00; seniors \$10.00

Museum Pass available from the Library.

The Long Island Museum is a place to rediscover the richness of America's cultural heritage.



LONG ISLAND SALTY COVE

646 Medford Avenue (Route 112), Patchogue, NY 11772

631-897-5910

www.lisaltykidscope.org

Hours: See website

Fee: See website

5K square feet of sensory-friendly, imaginative, indoor playground center for ages birth through 6 years.

LONG ISLAND STEAMERS

South Haven Park, Gerard Road Entrance, Brookhaven, NY 11719

631-345-0499

www.lilivesteamers.org

Hours: Typically the 2nd and last Sunday of each month from May until the end of October from 10:30 am - 3 pm. Check the calendar on their website, because there may be some exceptions to these dates.

Fee: There is no charge for rides. They do accept small donations of your choice.

This railroad model club has made mini trains for you and your kids can ride on! There is also a picnic area, as well as train items for sale.



MATTITUCK-LAUREL HISTORICAL SOCIETY AND MUSEUM

Main Road (Route 25) at Cardinal Drive, Mattituck, NY 11952

631-298-5248

www.mlhistoricalsociety.org

Hours: Open by appointment Saturday and Sunday from May through September.

Fee: Free, donations appreciated.

Buildings on the site include 2 houses (1799) and (1840), a schoolhouse (1846), milk house (circa 1850) and a farm outbuilding with 19th century farm implements and machines on display. Permanent exhibits also include American Indian artifacts recovered in Mattituck.

MICHAEL'S CRAFT STORE KIDS CLUB

www.michaels.com/campcreatology

Hours: See website

Fee: See website

Kids Craft Creatology for ages 6+. 12 projects four ways to explore - in store, live online, on demand or self-guided. In-store events for creative mini-makers.



MITCHELL PARK

115 Front Street, Greenport, NY 11944

631-477-2200

www.villageofgreenport.org/mitchell-park-greenport-village.php

Mitchell Park, described as the "jewel" of the Village of Greenport, is a four acre park located on the beautiful waterfront in the village. The park is home to the antique carousel that was donated by the Northrop Grumman Corporation. It also has an ice rink, blacksmith shop, camera obscura, and more.

MONTAUK POINT LIGHTHOUSE

2000 Montauk Highway, Montauk, NY 11954

631-668-2544

www.montauklighthouse.com

Hours: See website

Fee: Adults \$15.00; seniors \$10.00; children \$5.00.

Parking fee \$8.00 (8 am-4pm)

The Montauk Point Lighthouse is the oldest lighthouse in New York State.

This National Historic Landmark has been part of Long Island's land and seascape for over 200 years, and still serves as an active aid to navigation. The Lighthouse will be closed from June 28 through August 2.



OLD BETHPAGE VILLAGE RESTORATION

1303 Round Swamp Road, Old Bethpage, NY 11804

516-572-8409

www.oldbethpagevillagerestoration.org

Hours: Friday - Sunday from 10 am - 4 pm

Fee: Adults \$15, Children (5-12) \$12, Seniors (65+) \$12

Museum Pass available from the Library.

Where history comes alive! Explore various historic trade and craft demonstrations each day.

Discover our farm of domesticated animals and walk the beautiful historic homes and buildings.

OLD WESTBURY GARDENS

71 Old Westbury Road, Old Westbury, NY 11568

516-333-0048

www.oldwestburygardens.org

Hours: Open every day (except Tuesday) from 10 am - 6 pm

Fee: See website

Museum Pass available from the Library.

Old Westbury Gardens welcomes visitors of all ages for guided tours of the Westbury House, in-depth tours of the formal gardens, school visits, children's programs and events, family programs, museum exhibitions, classic car shows, indoor and outdoor activities.

ONCE UPON A TREETOP

15 Dupont Street, Plainview, NY 11803

516-349-1140

www.onceuponatreetop.com

Hours: See website

Fee: Two-hour sessions: Walkers \$20, Crawlers \$15, Infants \$10. One adult per child included.

An interactive city designed for young imaginations from birth to 8 years! LI's largest indoor playground.

PARRISH ART MUSEUM

279 Montauk Highway, Water Mill, NY 11976

631-283-2118

www.parrishart.org

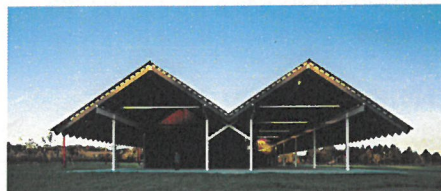
Hours: See website for hours.

Fee: See website / Free admission for visitors 18 and under.

Museum Pass available from the Library.

Focusing on American art from the 19th century to the present,

with a focus on Long Island's East End. Check the website for Family Fun Days and Festivals.



PECONIC PADDLER

89 Peconic Avenue, Riverhead, NY 11901

631-727-9895

www.peconicpaddler.com

Hours: Call for hours.

Fee: Call for pricing.

The Peconic River is LI's largest river and is also one of its most historic and ecologically diverse. Rent a canoe, kayak or SUP board and take a trip down this shallow, slow-moving river. It's both an education & an adventure.



PECONIC RIVER HERB FARM

2749 River Road, Calverton, NY 117933

631-369-0058

Hours: Open 7 days 10 am - 4 pm

Fee: Free

14 acres of picturesque landscape. Have a picnic or stroll and enjoy all that nature has to offer.

QUOGUE WILDLIFE REFUGE

3 Old Country Road, Quogue, NY 11959

631-653-4771

www.quoguewildliferefuge.org

Hours: Refuge trails and distressed wildlife complex open every day from sunrise to sunset.

Nature Center open Tuesdays, Thursday Saturdays and Sundays from 11 am-4 pm.

Fee: Free

Museum Pass available from the Library.

A 305-acre expanse of protected land with over seven miles of trails where you can explore a variety of habitats. There is also a Distressed Wildlife Complex which houses animals that have been injured and would not be able to survive in the wild.

RAILROAD MUSEUM OF LONG ISLAND

Greenport

4th Street at the Tracks

Greenport, NY 11944

631-477-0439

www.rmli.us

Hours: See website

Fee: See website

GREENPORT: 1890 LIRR freight station has photos, displays, uniforms, operating control tower, and a railroad model of Greenport. Outside is a 1907 snowplow, "Jaws," and a 1925 wooden caboose. There is also a gift shop.

RIVERHEAD: Retired railroad equipment on display, 2 LIRR diesel locomotives, the first LIRR all-aluminum double-decker passenger car, cars used in the LIRR steam-to-diesel conversion ceremony in 1955, and 2 retired M-1 cars. Ride the 1964-65 World's Fair mini train. Indoor museum features photos, railroad memorabilia and more.

Riverhead

416 Griffing Avenue

Riverhead, NY 11901

631-727-7920



SAFARI ADVENTURE

1074 Pulaski Street, Riverhead, NY 11901
631-727-4386
www.thesafariadventure.com
Hours: See website
Fee: See website



They offer a four-level playground where children can get plenty of exercise in the most exciting setting possible. The play equipment is perfect for children between the ages of 1 and 10. They also have enormous bouncers and a full set of over 30 video games and skill games to appeal to children of all ages.

SEATUCK ENVIRONMENTAL CENTER

550 South Bay Avenue, Islip, NY 11751
631-581-6908
www.seatuck.org
Hours: Call for more information.
Fee: Call for information



The 70-acre property, which contains diverse wetland and upland forest habitats, is open for hiking, birding, etc.

SKY ZONE TRAMPOLINE PARK

111 Rodeo Drive, Deer Park, NY 11717
631-402-5430
www.skyzone.com
Hours: See website
Fee: See website



Sky Zone is an indoor trampoline park. Experience WOW- the weightlessness of bouncing, flipping and landing in a pit piled with 10,000 foam cubes.

SOUTH FORK NATURAL HISTORY MUSEUM AND NATURE CENTER

377 Bridgehampton/Sag Harbor Turnpike, Bridgehampton, NY 11932
631-537-9735
www.sofa.org
Hours: 10 am - 4 pm
Fee: \$15 adults, \$10 per child 3-12 years of age, 2 and under free.



Museum pass available at the Library.

Come see nature exhibits brought indoors, interactive exhibits, including a marine touch tank and go on a nature walk! See live native reptiles and amphibians.

SOUTH SHORE NATURE CENTER

130 Bayview Avenue, East Islip, NY 11730
631-581-6908
www.seatuck.org/index.php/nature-centers/south-shore-nature-center
Hours: Weekdays from 9 am - 5 pm
Fee: Free.

The 200-acre preserve stretches to the shores of the Great South Bay. They have trails and boardwalks that afford visitors miles of access to the property's beauty and ecological diversity. The visitor's center provides interactive exhibits and collections of both live animals & mounted wildlife specimens.

SPLISH SPLASH

2549 Splish Splash Drive, Calverton, NY 11933
631-727-3600
www.splishsplash.com
Hours: See website
Fee: See website **Discount tickets available at the Library.**



Splish Splash has 96 exciting acres of total water fun for the whole family. 20 water slides, two wavepools, a large kiddie area, a lazy river and more.

ST. JAMES GENERAL STORE

516 Moriches Road, St. James, NY 11780

631-854-3740

www.facebook.com/St.JamesGeneralStore

Hours: 10 am - 5 pm 7 days a week

Fee: Call for details.

The oldest continuously-operating general store in the United States. Currently ongoing interpretive programs at the store include popular period-craft demonstrations, or events held each weekend, with quarterly festivals or holiday celebrations.

STONY BROOK GRIST MILL

Harbor Road off Main Street

Stony Brook, NY 11790

631-751-2244

<https://www.stonybrookvillage.com/what-to-do-attractions/stony-brook-grist-mill-circa-1751/>

Hours: Sundays from 1 pm – 4:30 pm

Fee: \$4 for adults and \$2 for children.

Long Island's most completely equipped working Grist Mill. Sample a slice of colonial life while touring a working grist mill. There is also a duck pond where you can feed the ducks and a walking trail.

SUFFOLK COUNTY FARM & EDUCATION CENTER

350 Yaphank Avenue, Yaphank, NY 11980

631-852-4600

www.ccesuffolk.org/suffolk-county-farm

Hours: 7 days a week from 9 am - 3 pm

Fee: Free, but you must sign up at the Visitor's Center.

Visitors are able to see a century-old working farm and visit with the farm animals and feed them with food purchased at the Main Desk.



SUFFOLK COUNTY POLICE DEPARTMENT MUSEUM

30 Yaphank Avenue, Yaphank, NY 11980

631-852-6011

www.facebook.com/watch/?y=10160267039450441

Hours: Monday-Thursday from 8:30 am - 4:30 pm

Fee: Free.

The Police Museum traces the evolution of policing in Suffolk from the 16th century Sheriff to the present day law enforcement professional. Featured are: interpretive displays such as the 1925 station house, Constable Miller's 1915 Traffic Booth, the old Riverhead Jail and a talking 1960 Police Car and Police Booth depicting the first year of operations of the County Police.

SWEETBRIAR NATURE CENTER

62 Eckernkamp Drive, Smithtown, NY 11787

631-979-6344

www.sweetbriarnc.org

Hours: Nature Center & Preserve Open Daily 9 am - 4:30 pm

Outdoor Butterfly Vivarium 10 am - 4 pm; 2nd week of June - September, weather dependent

Fee: Call for details.

Includes 54 acres, hiking with views of the Nissequogue River, and butterfly house.

Mock rain forest. Wildlife rehabilitation with eagles, hawks, and owls.

THEATRE THREE

412 Main Street, Port Jefferson, NY 11777

631-928-9100

www.theatrethree.com

Hours: See website

Fee: See website

For 40 years, Theatre Three, one of Long Island's not-for-profit theatres, has brought the best of Broadway to Main Street. Summer shows for children.



TIKI ACTION PARK

1878 Middle Country Road, Centereach, NY 11720 (behind Burger King)
631-471-1267

www.tikiactionpark.com

Hours: Open Friday, Saturday & Sunday - check website for hours.

Fee: See website

Voted Best Mini Golf on L.I. for 2025! Enjoy miniature golf, go-karts, arcade and laser tag.



U-PICK FARMS ON LONG ISLAND

www.pickyourown.org/nylongisland.htm

Find a list of farms where you can pick from apples to zucchini.

URBAN AIR

3147 Middle Country Road, Lake Grove NY 11755

631-861-4125

Hours: See website

Fee: See website

A trampoline and adventure park. There are tons of activities including climbing walls, bumper cars, rope course and more.

VANDERBILT MANSION/MUSEUM/PLANETARIUM

180 Little Neck Road, Centerport, NY 11721

631-854-5579

www.vanderbiltmuseum.org

Hours: See website

Fee: See website **Museum Pass available from the Library.**

This museum is a unique combination of mansion, marine and natural history museum, planetarium and park. It is dedicated to the education and enjoyment of the people of Long Island and beyond.



WALT WHITMAN BIRTHPLACE STATE HISTORIC SITE

246 Old Walt Whitman Road, Huntington Station, NY 11746

631-427-5240

www.waltwhitman.org

Hours: Summer Hours: June 15 through Labor Day Every day from 11 am - 4 pm

Fee: \$10 Adults, \$8 Students, Under age 5 free

Visit the 19th century farmhouse with 19th century furnishings and unusual architecture.

Guided tours, audio-visual show, library, museum shop/bookstore and picnic area.

WERTHEIM NATIONAL WILDLIFE REFUGE

340 Smith Road, Shirley, NY 11967

631-286-0485

www.fws.gov/refuge/wertheim

Hours: See website

Fee: Free

Wertheim National Wildlife Refuge protects 2550 acres on the South Shore. Visit the nature store or hike almost six miles of trails getting glimpses of all kinds of wildlife.

THE WHALING MUSEUM & EDUCATION CENTER

301 Main Street, Cold Spring Harbor, NY 11724

631-367-3418

<http://www.cshwhalingmuseum.org>

Hours: Summer hours; Everyday (except Monday) from 11 am-4 pm

Fee: Adults \$8.00, Seniors & Kids 4-17 \$6.00, Children 0-3 free.

Museum Pass available from the Library.

Their current exhibits display the whaling history of Cold Spring Harbor and Long Island, and their events highlight the relationship between people and the ocean. There are kids programs all summer long.



WHITE POST FARMS OF MELVILLE

250 Old Country Road, Melville, NY 11747

631-351-9373

www.whitepostfarms.com

Hours: 10 am - 5 pm daily

Fee: See website

Along with our large family of animals, our farm provides a playground of fun for families and friends to get together for an entire fun-filled day!

Websites to Find Family Friendly Events in Your Area

FIND FREE FUN @ YOUR LOCAL LIBRARY

www.live-brary.com

GEOCACHING

www.geocaching.com/

A modern-day treasure hunt where players hide and seek cached containers using GPS-enabled devices like smartphones or GPS navigators. This site will get you started.

THE KINDNESS ROCKS PROJECT

www.thekindnessrocksproject.com/

Go for a hunt around your neighborhood and find rocks that others have decorated with an inspirational message and have hidden in the community. You can even decorate rocks of your own and hide them! Post what you find on social media with the hashtag #thekindnessrocksproject. You can also add this hashtag to the rocks you decorate. This is how you connect with others. Use this website for more information.

SUFFOLK COUNTY CHAMBERS OF COMMERCE

www.longislandbrowser.com/community/chambers_of_commerce/

A listing of each town's Chamber of Commerce website to see the events going on near you!

Free Summer Concerts <https://www.longisland.com/summer-concert-series.html>

The list of free summer concerts is updated every year...usually a week or two before the start date. Listed are both Suffolk & Nassau County locations. You usually have to bring your own blankets and chairs.

MOMMY POPPINS BLOG

mommypoppins.com/long-island

NY METRO PARENTS

www.newyorkfamily.com/26-things-to-do-on-long-island-with-kids/

26 THINGS TO DO ON LONG ISLAND WITH KIDS - NEW YORK FAMILY

www.newyorkfamily.com

There's no shortage of things to do on Long Island with kids. Here are the top 26 things to do in Long Island with kids to try this year!

REAL LONG ISLAND

www.reallongisland.com/things-to-do-on-long-island-with-kids/

DISCOVER LONG ISLAND

www.discoverlongisland.com/things-to-do/kids-family/

DROP IN FOR THESE GREAT PROGRAMS

No registration required!

COLOR ME CURIOUS: TINKER LAB ACTIVITIES

All day, every day (P)

For children ages 4 and up. Beat the heat at our Main Branch's Tinker Lab!

Discover a new and colorful hands-on activity every week!

PRIDE MONTH SUNCATCHERS

The month of June (P)

Celebrate Pride Month by creating a suncatcher, to hang in a sunny window to brighten any room.

COLOR YOUR WORLD: A SUMMER ART EXHIBIT

For families. Starting Monday, June 2,

pick up a kit at our Patchogue or Medford locations and return your completed artwork by June 23. Paintings will be displayed in the Main Building and Medford Branch from July 1 through August 27. Kits are limited. While supplies last.

MESSY MEDFORD MONDAYS

Mondays, June 9, July 14 and/or

August 11 from 10:30 am-11:30 am (M)

For ages 2-5 years. Dress for a mess for some fun sensory play!

2025 PMLIB TALENT SHOW AUDITIONS

Friday, June 20 from 4-6 pm (M)

Monday, June 30 from 4-6 pm (P)

For grades K-12. Calling all singers, dancers, magicians and/or comedians! Audition for a spot in the 2025 Talent Show!

Must be available for the Talent Show on Friday, August 8 and dress rehearsal on Wednesday, August 6.

TOUCH-A-TRUCK

Saturday, June 28 from 10 am-12 pm

For families. See, touch and explore heavy machinery and meet the people who build, protect and serve the community.

COLOR OUR WORLD COLOR-A-THON

Tuesday, July 1 from 1:30-3:30 pm (P)

For families with children ages 3 and up. Unleash your creativity in this open-ended coloring session.

COLOR OUR WORLD CHALK-A-THON

Wednesday, July 2 from 10 am-12 pm (M)

For families with children ages 3 and up. Spread color and creativity with vibrant chalk art!

DAVIS PARK STORY TIMES

Tuesdays, July 8, 15, 22, 29 and August 5 at 11 am **at Davis Park, Fire Island**

For families. Take a break from the beach and join us on the boardwalk for a splashy storytime in the shade!

LET'S LEGO

Friday, July 18 from 12-5 pm and/or Friday, August 15 from 11 am-5 pm (P)

For families with children ages 2 and up. LEGO and DUPLO sets will be out for some family fun.

SUNSHINE & STORIES IN THE PARK

Thursday, July 31 from 10:30-11:30 am **at Eagle Estates Park in Medford**

For families. Enjoy an outdoor storytime with Miss Mary!

TALENT SHOW AT CIRCUS ON MAIN

Friday, August 8 at 6 pm*

For families. Sing, dance and cheer along during an evening of performances right on Main Street!

WHAT'S HAPPENING IN YOUR TOWN

VILLAGE OF PATCHOGUE SHOREFRONT PARK

SUMMER CONCERTS

**12
JULY**

MILAGRO
7:00PM - 9:00PM

**18
JULY**

THAT 70'S BAND
7:00PM - 9:00PM

**2
AUG**

**AMBER FERRARI
JOPLIN'S
"PEARL" & "BENATAR"**
7:00PM - 9:00PM

**22
AUG**

**POUR SOME
80'S ON ME**
7:00PM - 9:00PM

**29
AUG**

**KIDS DANCE FOAM PARTY
FEAT. ALBERT LEE MUSIC**
7:00PM - 9:00PM

**13
SEPT**

**THE MAX
THE ULTIMATE 90S PARTY**
7:00PM - 9:00PM

20TH YEAR OF OUR BELOVED SUMMER CONCERT SERIES

GREAT SOUTH BAY MUSIC FESTIVAL

Sponsored by Voodoo Ranger

July 24-27th Shorefront Park Patchogue, NY

THURSDAY, JULY 24

TAKING BACK SUNDAY
SAY ANYTHING
GYM CLASS HEROES
HEAD AUTOMATICA
MONSTOP TO CAIRO - FLYCATCHER
IMPOSTERS - THESE PEOPLE

FRIDAY, JULY 25

"ROCK-REGGAE-SKA BEACH PARTY"
DAMIANI + STEPHEN
MARLEY
THE ELOYATERS
TBOOG
OGGEE WYNN - PROJECT VIDE
CHRIS BUGH BAND - BIG HAPPY ROOTS FOUNDATION
NIKKI SILVA - HALFBEARDS - REGGAEAR PEOPLE
BURNTOWN FALLS

SATURDAY, JULY 26

MOE.
UMPHREY'S MCGEE
PIGEONS PLAYING PING PONG
EGGY
KERRY KEARNEY NEW OR-LINS GUMBO
ALLMOST BROTHERS BAND - MILES TO DAYTON
THE RIPPLE ALLSTARS - CIRCUIS MIND - ESCAPER
SAILIN' SHOES - SOUNDSWELL - THE OH-EN
ROBINSON TREACHER - FIRETOG & CO. - ORCHYD

SUNDAY, JULY 27

"ROCK THE BAY - GO'S BEACH PARTY"
MEN AT WORK
YACHT ROCK REVUE
NAKED EYES
AMBROSIA
STRANGELOVE
FUNKIN' A - GAMBLERS - PAM BETTY - CHRIS MILO
PLAYIN' ENGLISH - AZWEL - ROB BRUEY - ROB EDERLE
HOSTED BY LARRY "THE DICK" DUNK
OF ABOUT 500 & 500

4 DAYS - 3 STAGES - OVER 55 PERFORMERS
BEER & WINE GARDENS - ARTISANS & CRAFTSPEOPLE
LIVE ART - KIDZONE

Shorefront Park, On the Magnificent Great South Bay, Patchogue
www.GreatSouthBayMusicFestival.com

TOWN OF BROOKHAVEN PARKS & RECREATION DEPARTMENT

www.brookhavenny.gov/216/
Parks-Recreation

FREE

SUMMER CONCERT SERIES

7-9PM AT MEDFORD MEMORIAL PARK



Brought to you by



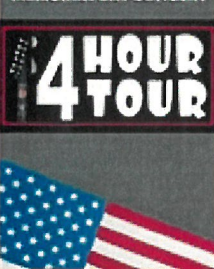
**SUFFOLK COUNTY
LEGISLATURE**

MEDFORDCHAMBEROFCOMMERCE.COM

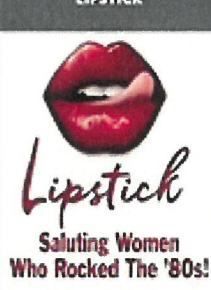
MEDFORD ROCKS!

50/50
Raffle
With
2nd Prize:
\$50 Gift
Card to
Rudi's Pub
Proceeds to
Benefit The
Chamber Fund

FRIDAY
MAY 23RD
ECLECTIC MUSIC MIX!
MEMORIAL DAY CONCERT



WEDNESDAY
JULY 9TH
LIPSTICK



WEDNESDAY
JULY 23RD
FLASHBACK
70'S ARENA ROCK!



WEDNESDAY
AUGUST 6TH
ROCK
THIS TOWN



WEDNESDAY
AUGUST 20TH
FAST LANE
EAGLES TRIBUTE



FRIDAY
SEPTEMBER 5TH
ELTON JOHN & BILLY JOEL
TRIBUTE





PATCHOGUE-MEDFORD
LIBRARY
54-60 East Main Street, Patchogue, NY 11772
(631) 654-4700 • www.pmlib.org